



COUNCILMEMBER JOEY MANAHAN

CITY COUNCIL DISTRICT 7

HONOLULU HALE, 530 S. KING STREET ROOM 202, HONOLULU, HI 96813

PHONE: (808) 768-5007 • FAX: (808) 768-1200 • EMAIL: jmanahan@honolulu.gov

WEBSITE: www.joeymanahan.wordpress.com

PORTIONS OF KALIHI VALLEY & LIUHA, KALIHI-PALAMA, IWILEI, KALIHI KAI, SAND ISLAND,
MAPUNAPUNA, SALT LAKE, ALIAMANU, HICKAM, FOSTER VILLAGE, PEARL HARBOR,
AND PORTIONS OF AIEA/HALAWA ESTATES

Storm Causes Massive Wastewater Spill

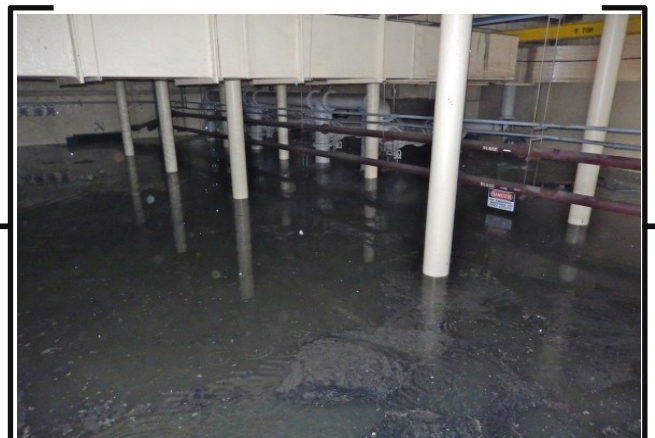
Hawaii, and especially the City and County of Honolulu lucked out when Hurricane Ana threatened the island chain during the weekend of October 17. However, the Sand Island Wastewater Treatment Plant (SIWWTP), which is not only located in Council District 7 – but serves all of metropolitan Honolulu from Salt Lake to Hawaii Kai, was disrupted by Ana. The plant is able to process 60 million to 70 million gallons of wastewater on an average day and is also equipped to handle twice of that, but Ana added hundreds of more gallons, and the wastewater spiked up to 240 million gallons.

Due to the overload, the system sent 5,000 gallons of partially treated wastewater into Honolulu Harbor, and 20 million gallons into the treatment plant's storeroom. This can be equated to about 6 to 8 feet of sewage where SIWWTP's electrical panels are located. Those electrical panels operate the plant's eight sewage clarifiers. SIWWTP was able to still treat wastewater, but was unable to send the sludge from the sewage to a processing plant until the electricity was restored.

Legislative Update

Bill 54 (2014)

On October 23, 2014, Honolulu Mayor Kirk Caldwell signed and approved Bill 54 (2014) introduced by Councilwoman Ann Kobayashi. The bill increases the income threshold requirements for homeowners seeking to receive real property tax credit as defined in Section 8-13.2, Revised Ordinances of Honolulu. It has been 9 years since the threshold has been raised, and increases have been long overdue. Now, beginning September 30, 2014, homeowners whose annual combined incomes do not exceed \$60,000 may apply for real property tax credit.



Troops for Fitness Recreation Festival

November 14, 2014
Salt Lake District Park
3:00PM to 5:00PM
Free Admission
All Ages Welcome

The City and County of Honolulu's Department of Parks and Recreation will be bolding its kickoff event for Coca Cola's Troops for Fitness program. Over the next three years this program will seek to hire veterans to teach fitness and nutrition classes to help inspire healthier, active lifestyles among the general public.

Event Schedule

- 3:00 PM Welcome in the Salt Lake District Park Gym
3:15PM Warm Up Activity
3:30PM Session 1—Basketball, Archery, Ballroom Dancing, Stand up paddling, water activities, Tai Chi
4:15PM Session 2—Basketball, Archery, Hula, Stand up paddling, water activities , Tai Chi

For more information, please contact Steven Santiago at (808) 973-7258.

District 7 Staff



Radiant Cordero

Senior Advisor
rcordero@honolulu.gov

Valerie Sadural

Legislative Analyst
vsadural@honolulu.gov

Mitchel Cabrerros

Legislative Aide
mcabrerros@honolulu.gov

Dennis Arakaki

Community Liaison
darakaki2@honolulu.gov

Shirley Templo

Community Aide
stemplo@honolulu.gov

Mahalo!!!

Special thanks to the Department of Parks and Recreation for replacing the torn basketball nets at Ala Puumalu Community Park. Mahalo for keeping our city parks clean and safe!

If you have inquiries or concerns regarding Ala Puumalu Community Park, you may reach their office at (808) 831-7231 or DPR's District 2 Office-West Honolulu at (808) 522-7074.

Ala Puumalu Community Park is closed between 8:00PM to 6:00AM.

Calendar of Meetings, Events, & Activities

NOVEMBER

- 4 — General Election Day (Holiday)
- 11 — Veteran's Day (Holiday)
- 12 — Council Meeting at Honolulu Hale from 10:00AM to 4:30PM
 Fall Book Fair at Pearl Harbor Elementary School from 2:00PM to 3:00PM
- 13 — Fall Book Fair at Pearl Harbor Elementary School from 2:00PM to 3:00PM
- 14 — 1st Fall Festival at Pearl Harbor Elementary School from 2:00PM to 8:00PM
 Troops for Fitness Recreational Festival at Salt Lake District Park from 3:00PM to 5:00PM
- 15 — Annual Craft Fair at Radford High School Cafeteria from 9:00AM to 2:00PM
- 18 — Council Committee Meetings at Honolulu Hale:
 Public Safety & Economic Development 9:00AM
 Parks and Customer Services 10:30 AM
 Executive Matters and Legal Affairs 1:00PM
- 19 — Council Committee Meetings at Honolulu Hale:
 Budget 9:00AM
 Public Works and Sustainability 1:00PM
- 20 — Council Committee Meetings at Honolulu Hale:
 Zoning & Planning 9:00AM
 Transportation 1:00PM
 Intergovernmental Affairs & Human Services 2:30PM
- 22 — Mayor's Craft and County Fair at Neal Blaisdell Center from 9:00AM to 2:00PM
- 27 — Thanksgiving Day (Holiday)

DECEMBER

- 6 — Honolulu City Lights Opening Night Celebration at City Hall from 5:00PM to 10:00PM
- 10 — Council Meeting at Honolulu Hale from 10:00AM to 4:30PM

FREQUENTLY CALLED NUMBERS

Abandoned Vehicles	733-2530	Pothole Hotline	768-7777
Building Inspector	768-8259	Property Assessment	768-3799
Building Permit	768-8220	Property Tax Bill/Payment	768-3980
Bus Route/Schedule Information	848-5555	Recycling	768-3200
City Council	768-5010	Refuse Collection, Green Waste. Bulky Item Pick-up	768-5220
Civil Defense Agency (Oahu)	723-8960	Road Ownership Inquiry	768-8725
Complaint (About City Government)	768-4381	Roosters (Crowing) CSD	768-4381
Dead Animal Pickup	832-7840	Satellite City Halls (City Square)	768-4500
Department of Transportation Complaint Hotline/ HI Rehab Inquiries	831-6714 or 485-6200	Senior Citizen Information	768-7700
Dog License	532-7710	Sewer Line Problem	768-7272
ENV Refuse Inspector's Office (illegal dump sites, late pick-up trash & bulky items, concerns)	768-5220	Storm Drain Cleaning (cleaning of streams, drain line and catch basins, channels or other waterways)	768-3600 or 911 (weekend only)
Graffiti Hotline	723-3475 or 911	Street Light Repair	768-5300
HandiVan Reservations	456-5555	Street Sign Repair	768-3638
Information City Government	768-4385	Street Use Permits	768-8387
Motor Vehicle Registration	532-4325/4324	Towed Vehicle	529-3111
Neighborhood Boards	768-3710	Tree Trimming	971-7151
Narco/Vice Division (HPD; Officer Loke) Gambling, Gaming Establishment, Drug & Prostitution	723-3933	Water Service (Billing)	748-5020
Parks (General Information)	768-3003	Water Service (Customer Service)	748-5000
Park Permits	768-3440	Water Service (Line Break Emergency)	748-5000
Police Information Community Affairs	529-3352	Zoning Information	768-8252